

**ELECTROMAGNETIC VIBRATORS**

**Good Vibrations**



**ELECTROMAGNETIC VIBRATORS**

Specially designed to be included in Food Processing Lines, and Packaging Machines:



- Vibrating channels and dosers
- Inline weighers
- Multi head weighers
- Horizontal flow wrappers
- Feeders or sieves to elevators or weighers
- Sorting machines
- Transfer machines to/from belts..

and any other industry with a need of controlled dosing for solids.



FT-0



FT-01 y FT-02



BF-01 y BF-2



BF-3



RS

Model	Power (w)	Current (amps)	Weight (Kg)	Capacity (t/h)	Amplitude (mm.)
RS		0,75	10,5		2,3
FT-0	15	0,18	4,3	0,6	1,6
FT-01	20	0,4	9,5	2	1,6
FT-02	35	0,75	15	8	2,3
BF-01	50	1,2	14	5	1,6
BF-2	80	2	30	9	1,6
BF-3	150	4	60	20	2,3

Capacity based on dry sand, density 1.6 t/h

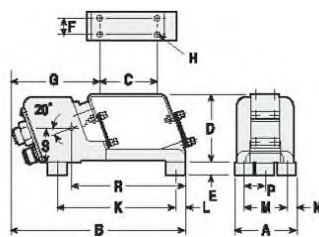
Models RS, multi head weigher, FT-02 and BF-3, have a higher amplitude than conventional electromagnetic vibrators, for what they can reach higher speeds and capacities, and also handle product more difficult to move forward.



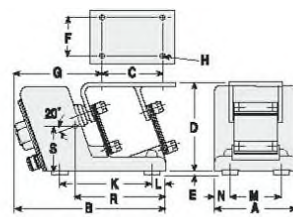
# ELECTROMAGNETIC VIBRATORS

## SPECIFICATIONS AND DIMENSIONS (m.m.)

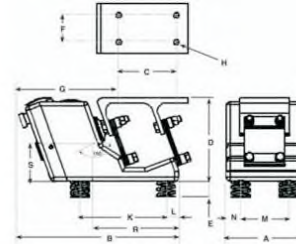
**FT-0**



**FT-01**



**FT-02**

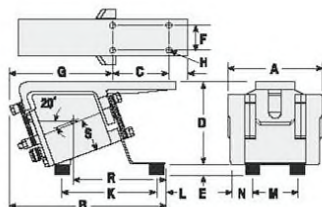


Modelo	A	B	C	D	E	F	G	H	J	K	L	M	N	P	R	S	T
FT-0	83	222	76	90	—	25	108	6		159	13	57	13	29	140	37	
FT-01	127	232	95	137	—	44	133	9		143	21	79	24		140	64	
FT-02	127	276	95	128	—	44	169	9		144	20	79	24		144	64	

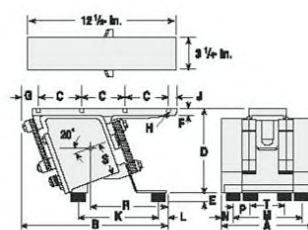
Centre of mass - this point should coincide with the centre of trough mass at a 20° working angle

Dimensions E might vary depending on the feet mounted in the vibrator

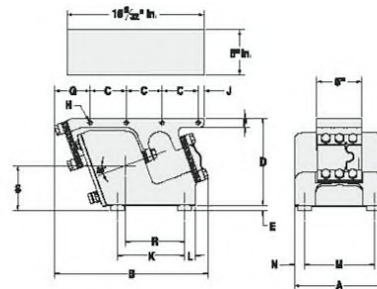
**BF-01**



**BF-2**



**BF-3**



Modelo	A	B	C	D	E	F	G	H	J	K	L	M	N	P	R	S	T
BF-01	167	273	95	144	—	44	184	9	13	167	14	79	44		171	57	
BF-2	203	321	102	178	—	8	32		8	178	19	152	25	38	184	70	76
BF-3	254	435	102	245	—	25	102		17	191	30	197	29		167	125	

Centre of mass - this point should coincide with the centre of trough mass at a 20° working angle

Dimensions E might vary depending on the feet mounted in the vibrator

## ELECTROMAGNETIC VIBRATORS

### CHARACTERISTICS AND ADVANTAGES:

- \* Instant regulation and start stop
- \* Liability and durability
- \* Large range of models
- \* Stable and silent running
- \* Smooth running not to break the product
- \* Sealed against water
- \* ATEX execution if specified
- \* High amplitude models
- \* Possibility of regulating from PLC



BF feeder with  
corrugated channel

### MULTIPLE TYPES OF TROUGHS FOR DIFFERENT APPLICATIONS:

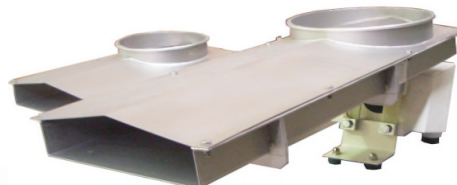
Depending on the application needs, the troughs will be made with different materials and according to different shapes and designs.



Dual vibrators feeder



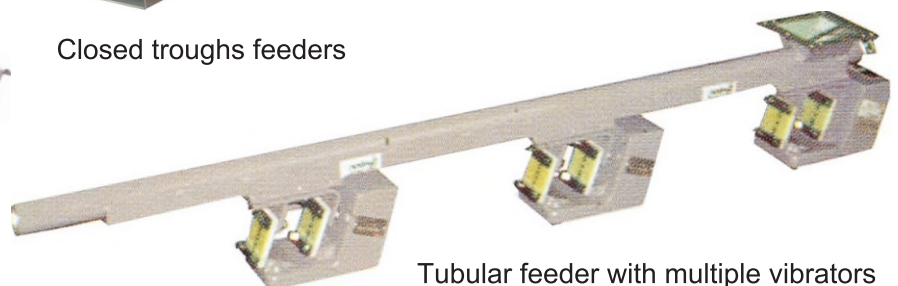
Electromagnetic feeder with sieve



Closed troughs feeders



Open standard trough



Tubular feeder with multiple vibrators

## ELECTROMAGNETIC VIBRATORS

### ELECTROMAGNETIC VIBRATORS FOR SPECIAL APPLICATIONS

Also TARNOS manufactures electromagnetic vibrators for hoppers, or other type of containers and conductors, that can be included in very particular applications and machines, due to its smooth controlled vibration, easy installation, and compact dimensions.



V-4 model for food Industry



electromagnetic vibrators for hoppers



compact V-2 vibrator

### ELECTROMAGNETIC VIBRATING REGULATION



All electromagnetic vibrators **TARNOS** have an instant current regulation by a controller that incorporates a potentiometer.

This regulator can be supplied without enclosure if it is to be integrated into a general control cabinet for the installation.

Controller can be provided with one or two speeds. Also 4-20 MA signal so that it can be regulated through a PLC.



# **TARNOS**

C/ Sierra de Gata, 23  
28830 San Fernando de Henares (Madrid)  
Tel.: (+34) 91 656 41 12 • Fax: (+34) 91 676 52 85  
[tarnos@tarnos.com](mailto:tarnos@tarnos.com) • [www.tarnos.com](http://www.tarnos.com)